

\$444,888 - 114, 285 Chelsea Court, Chestermere

MLS® #A2241777

\$444,888

2 Bedroom, 3.00 Bathroom, 1,263 sqft

Residential on 0.00 Acres

Chelsea_CH, Chestermere, Alberta

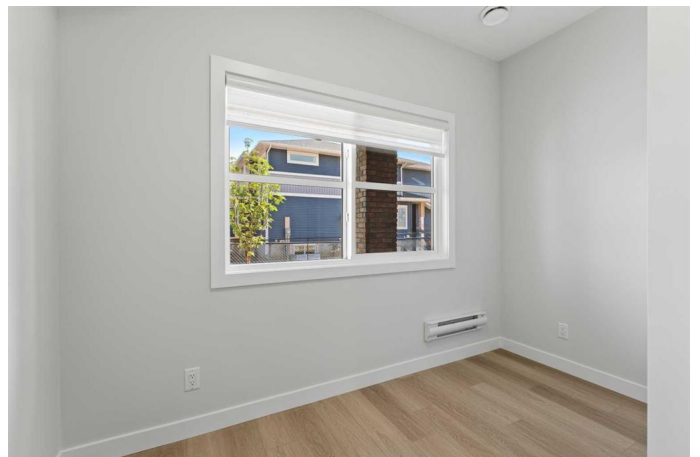
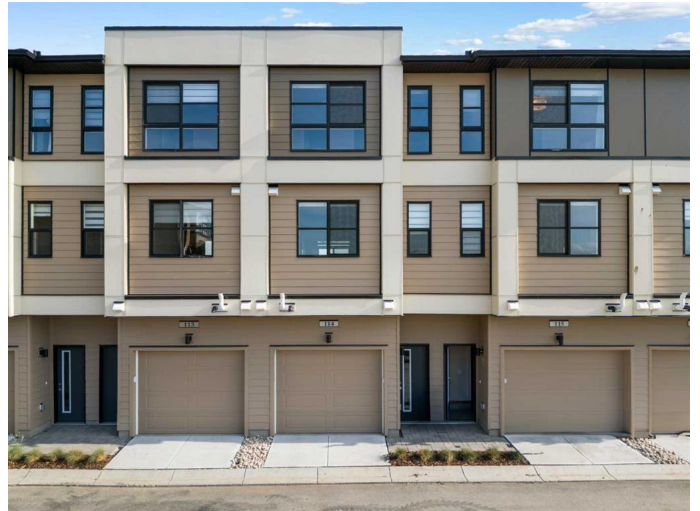
OPEN HOUSE SATURDAY AND SUNDAY
FROM 1â€“3 PM

Welcome to Chelsea Court, where the thoughtfully crafted "Monarch" townhome by Trico Homes delivers both comfort and functionality in a stylish package. This pre-construction residence features 3 bedrooms, 2.5 bathrooms, and over 1,209 square feet of well-designed living space.

The entry level includes a 2-car tandem garage and offers the option to include a flex room with a full bathroomâ€”ideal for guests, a home office, or hobby space.

Upstairs, the main living area is designed with 9-foot ceilings and an open-concept layout that encourages connection and flow. The modern kitchen includes quartz countertops and stainless steel appliances, creating a beautiful and efficient space for cooking and entertaining. Step outside onto the private front deck to enjoy views of the nearby green space and walkways, perfect for morning coffee or evening relaxation.

On the upper level, the ownerâ€™s suite is a peaceful retreat with a generous walk-in closet and a private 4-piece ensuite. Two additional bedrooms and another full bathroom ensure everyone has their own space. A conveniently located upper-level laundry area makes daily chores more manageable.



Chelsea is an exciting new community on the western edge of Chestermere, designed with families in mind. The neighborhood offers a range of housing options—townhomes, duplexes, and single-family homes—within a master-planned layout that includes over 9 acres of park space, three storm ponds, and a natural wetland eco-park. Two connected pathway systems make it easy to walk, bike, or explore the outdoors.

Residents enjoy close proximity to essential amenities, including schools, shopping, and recreation. The popular Chestermere Lake is just minutes away, offering year-round activities and scenic views. With its combination of natural landscapes and modern conveniences, Chelsea is an ideal place to call home.

Don't miss this opportunity to be part of a growing community in Chestermere—schedule your showing today!

Built in 2025

Essential Information

MLS® #	A2241777
Price	\$444,888
Bedrooms	2
Bathrooms	3.00
Full Baths	2
Half Baths	1
Square Footage	1,263
Acres	0.00
Year Built	2025
Type	Residential
Sub-Type	Row/Townhouse
Style	2 Storey
Status	Active

Community Information

Address	114, 285 Chelsea Court
Subdivision	Chelsea_CH
City	Chestermere
County	Chestermere
Province	Alberta
Postal Code	T1X 2W7

Amenities

Amenities	None
Parking Spaces	2
Parking	Double Garage Attached, Tandem
# of Garages	2

Interior

Interior Features	Double Vanity, Open Floorplan, Quartz Counters, Walk-In Closet(s)
Appliances	Dishwasher, Microwave Hood Fan, Refrigerator, Stove(s), Washer/Dryer Stacked
Heating	Forced Air
Cooling	None
Fireplace	Yes
# of Fireplaces	1
Fireplaces	Electric
Basement	None

Exterior

Exterior Features	Balcony
Lot Description	Street Lighting
Roof	Asphalt Shingle
Construction	Vinyl Siding, Wood Frame
Foundation	Poured Concrete

Additional Information

Date Listed	July 25th, 2025
Days on Market	5

Listing Details

Listing Office	eXp Realty
----------------	------------

Data is supplied by Pillar 9â„¢ MLS® System. Pillar 9â„¢ is the owner of the copyright in its MLS® System. Data is deemed reliable but is not guaranteed accurate by Pillar 9â„¢. The trademarks MLS®, Multiple Listing Service® and the associated logos are owned by The Canadian Real Estate Association (CREA) and identify the quality of services

provided by real estate professionals who are members of CREA. Used under license.