

# \$599,999 - 7 Goodacre Close, Red Deer

MLS® #A2202047

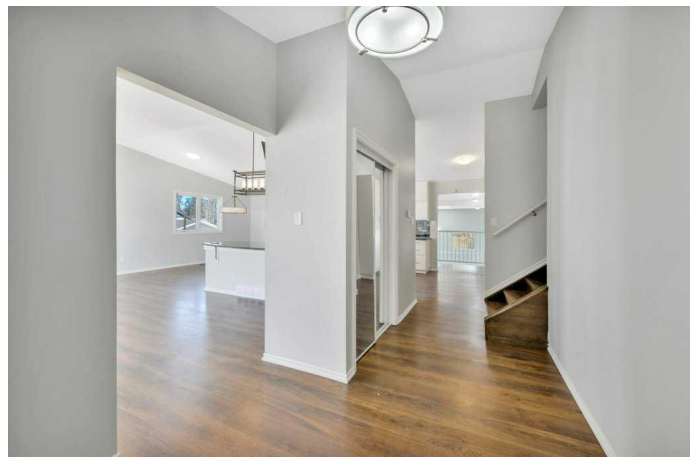
**\$599,999**

4 Bedroom, 4.00 Bathroom, 2,754 sqft

Residential on 0.22 Acres

Glendale Park Estates, Red Deer, Alberta

Nestled on a sprawling 9,790 sq ft lot within a quiet Glendale cul-de-sac, this remarkable 2700 sq ft 4-level split home offers an amazing blend of space and opportunity. The open-concept design seamlessly connects the kitchen, dining, and living areas, creating an inviting space for both everyday living and entertainment. The kitchen boasts elegant granite countertops, and plenty of cabinet storage with a secondary pantry wall cabinet. Directly off the kitchen is the massive 27'5" x 27'3" great room that can accommodate anything your imagination desires. Open up a daycare, dance or martial arts studio. Host music lessons, a private art gallery, or salon. It really can be anything you want it to be! The ground-level family room offers versatility with a fireplace that can be easily recommissioned and a roughed-in wet bar, perfect for gatherings. Off the patio doors is a 20x15 ground level deck that has a pre-run power line for future hot tub considerations. Just off the garage entrance, the ground-level laundry adds convenience to your daily routines. On the top floor, a very large master bedroom offers a 5'6" x 8'4" walk-in closet and a 3 piece ensuite with immediate and unlimited hot water to the tiled shower. Two more large bedrooms are on the top floor, along with a 5 piece bathroom with double vanities. The lowest level has a carpeted recreation room, perfect for a multimedia theatre experience. Off this is the very large 4th bedroom that has a 4 piece ensuite and can be used as a second primary



bedroom. Outside in the exceptionally spacious yard, a dog-run along the north side of the property can be readily completed using the included chain link fencing. The open and unobstructed yard can again accommodate anything your imagination desires. This property presents incredible potential for a wide variety of home-based businesses, offering ample space and flexible layouts. An exceptional opportunity to own a substantial home on a substantial lot awaits, ideal for families and entrepreneurs alike seeking a comfortable and functional living space that can cater to every need.

Built in 1982

### **Essential Information**

MLS® #	A2202047
Price	\$599,999
Bedrooms	4
Bathrooms	4.00
Full Baths	3
Half Baths	1
Square Footage	2,754
Acres	0.22
Year Built	1982
Type	Residential
Sub-Type	Detached
Style	4 Level Split
Status	Active

### **Community Information**

Address	7 Goodacre Close
Subdivision	Glendale Park Estates
City	Red Deer
County	Red Deer
Province	Alberta
Postal Code	T4P 3A3

### **Amenities**

Parking Spaces	4
Parking	Double Garage Attached, Parking Pad
# of Garages	2

### **Interior**

Interior Features	Ceiling Fan(s), Double Vanity, High Ceilings, Kitchen Island, Open Floorplan, Skylight(s), Tankless Hot Water, Vaulted Ceiling(s), Walk-In Closet(s), Solar Tube(s)
Appliances	Dishwasher, Refrigerator, Stove(s), Washer/Dryer
Heating	Forced Air
Cooling	Central Air
Fireplace	Yes
# of Fireplaces	1
Fireplaces	Wood Burning
Has Basement	Yes
Basement	Finished, Full

### **Exterior**

Exterior Features	Dog Run, Other
Lot Description	Back Yard, Cul-De-Sac, Pie Shaped Lot
Roof	Asphalt Shingle
Construction	Wood Frame, Wood Siding
Foundation	Poured Concrete

### **Additional Information**

Date Listed	March 19th, 2025
Days on Market	23
Zoning	R1

### **Listing Details**

Listing Office	RE/MAX real estate central alberta
----------------	------------------------------------

Data is supplied by Pillar 9â„¢ MLSÂ® System. Pillar 9â„¢ is the owner of the copyright in its MLSÂ® System. Data is deemed reliable but is not guaranteed accurate by Pillar 9â„¢. The trademarks MLSÂ®, Multiple Listing ServiceÂ® and the associated logos are owned by The Canadian Real Estate Association (CREA) and identify the quality of services provided by real estate professionals who are members of CREA. Used under license.