

# \$699,000 - 20 Willow Park Point, Cochrane

MLS® #A2192095

**\$699,000**

4 Bedroom, 4.00 Bathroom, 1,962 sqft  
Residential on 0.10 Acres

The Willows, Cochrane, Alberta

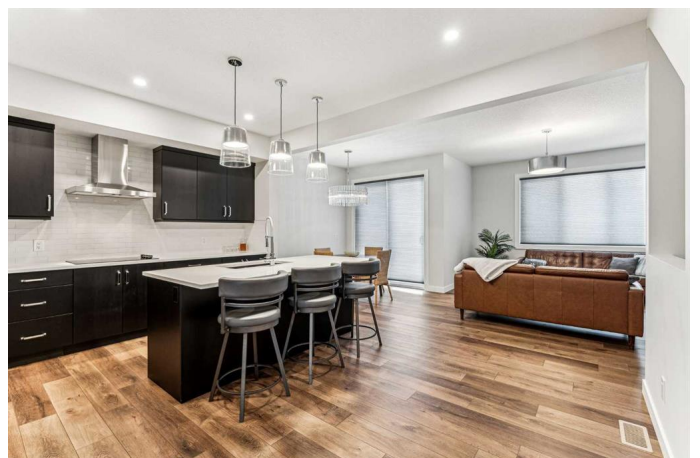
A Modern Retreat in the Heart of Cochrane!

Imagine coming home to a place that blends style, comfort, and convenience seamlessly. This stunning 4-bedroom + second floor den, 3.5-bathroom home, nestled in the heart of Cochrane, is the perfect space to create lifelong memories. With over 2500 sq. ft. of meticulously designed living space, this two-storey gem is move-in ready, offering modern elegance and thoughtful details at every turn.

Step through the front door and into a beautifully designed black-and-white kitchen—a showstopper with gleaming quartz countertops, sleek cabinetry, and stylish finishes. Whether you're cooking up a gourmet meal or gathering with loved ones, this space was built for both function and beauty.

Upstairs, a cozy den overlooks a peaceful green space, making it the perfect retreat for a home office, reading nook, or creative escape. Each bedroom is a haven of relaxation, designed to offer comfort and privacy for family and guests alike.

The professionally finished basement provides even more room to live, work, and play. Whether you dream of a home theater, a games room, or a guest suite, this flexible space is ready to adapt to your needs.



Location matters, and this home delivers. Schools, picturesque parks with playgrounds, and endless walking and biking trails are all just moments away, ensuring a lifestyle that balances urban convenience with the beauty of nature.

This home isn't just move-in ready, it's waiting for you to make it your own. Don't miss out on this incredible opportunity—schedule your private tour today and experience the best of Cochrane living! Let's make YOUR dreams... Realty!

Built in 2022

### Essential Information

MLS® #	A2192095
Price	\$699,000
Bedrooms	4
Bathrooms	4.00
Full Baths	3
Half Baths	1
Square Footage	1,962
Acres	0.10
Year Built	2022
Type	Residential
Sub-Type	Detached
Style	2 Storey
Status	Active

### Community Information

Address	20 Willow Park Point
Subdivision	The Willows
City	Cochrane
County	Rocky View County
Province	Alberta
Postal Code	T4C2V3

### Amenities

Parking Spaces	4
Parking	Double Garage Attached, Front Drive, Garage Door Opener, Garage Faces Front
# of Garages	2

### **Interior**

Interior Features	Closet Organizers, Double Vanity, High Ceilings, Kitchen Island, Low Flow Plumbing Fixtures, No Smoking Home, Open Floorplan, Pantry, Quartz Counters, Recessed Lighting, Storage, Vinyl Windows, Walk-In Closet(s)
Appliances	Built-In Oven, Convection Oven, Dishwasher, Dryer, Electric Cooktop, ENERGY STAR Qualified Appliances, ENERGY STAR Qualified Dryer, Garage Control(s), Humidifier, Microwave, Range Hood, Refrigerator, Washer, Window Coverings, ENERGY STAR Qualified Dishwasher, ENERGY STAR Qualified Refrigerator, ENERGY STAR Qualified Washer
Heating	High Efficiency, ENERGY STAR Qualified Equipment, Make-up Air, Fireplace(s), Forced Air, Natural Gas
Cooling	None
Fireplace	Yes
# of Fireplaces	1
Fireplaces	Gas, Living Room, Mantle, Tile
Has Basement	Yes
Basement	Finished, Full

### **Exterior**

Exterior Features	BBQ gas line
Lot Description	Back Yard, City Lot, Cul-De-Sac, Landscaped, Low Maintenance Landscape, Rectangular Lot, Sloped
Roof	Asphalt Shingle
Construction	Stone, Vinyl Siding, Wood Frame
Foundation	Poured Concrete

### **Additional Information**

Date Listed	February 6th, 2025
Days on Market	60
Zoning	R-MX

### **Listing Details**

Listing Office	Royal LePage Benchmark
----------------	------------------------

Data is supplied by Pillar 9â„¸ MLSÂ® System. Pillar 9â„¸ is the owner of the copyright in its MLSÂ® System. Data is deemed reliable but is not guaranteed accurate by Pillar 9â„¸. The trademarks MLSÂ®, Multiple Listing ServiceÂ® and the associated logos are owned by The Canadian Real Estate Association (CREA) and identify the quality of services provided by real estate professionals who are members of CREA. Used under license.