

\$725,000 - 38280 Range Road 35, Rural Red Deer County

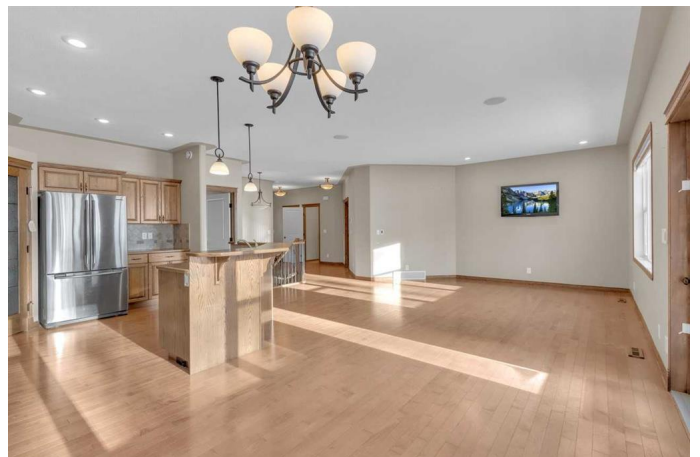
MLS® #A2187505

\$725,000

3 Bedroom, 3.00 Bathroom, 1,479 sqft
Residential on 13.68 Acres

NONE, Rural Red Deer County, Alberta

Welcome to this stunning 13.68-acre property featuring a beautifully finished True Line home built in 2009. This spacious residence boasts 1479 sqft, offering 4 bedrooms and 2.5 baths, perfect for families seeking room to grow. The double car attached garage is insulated and equipped with a mounted natural gas heater, providing comfort year-round. Enjoy a functional and spacious kitchen, convenient main floor laundry, and a bright living and dining area enhanced by south-facing windows. Step outside to a generous 42'x10' deck, complete with a gas attachment for your outdoor cooking needs. The fully finished basement features 2 additional bedrooms, a full bath, a rec room with a wet bar, and a cozy theater room, making it ideal for entertaining. With energy-efficient features including an energy-efficient furnace, in-floor heat in the basement, and hot water on demand, this home is both comfortable and economical. Located just 20 minutes southwest of Sylvan Lake, this property offers a perfect blend of country living and modern amenities.



Built in 2009

Essential Information

MLS® #	A2187505
Price	\$725,000

Bedrooms	3
Bathrooms	3.00
Full Baths	2
Half Baths	1
Square Footage	1,479
Acres	13.68
Year Built	2009
Type	Residential
Sub-Type	Detached
Style	Bungalow, Acreage with Residence
Status	Active

Community Information

Address	38280 Range Road 35
Subdivision	NONE
City	Rural Red Deer County
County	Red Deer County
Province	Alberta
Postal Code	T4E 3B7

Amenities

Parking	Double Garage Attached
# of Garages	2

Interior

Interior Features	Pantry, Laminate Counters
Appliances	Dishwasher, Garage Control(s), Refrigerator, Stove(s), Washer/Dryer
Heating	Forced Air, Natural Gas
Cooling	None
Has Basement	Yes
Basement	Finished, Full

Exterior

Exterior Features	Storage
Lot Description	Treed
Roof	Asphalt
Construction	Wood Frame
Foundation	Poured Concrete

Additional Information

Date Listed January 17th, 2025

Days on Market 83

Zoning AG

Listing Details

Listing Office eXp Realty

Data is supplied by Pillar 9â,,ç MLSÂ® System. Pillar 9â,,ç is the owner of the copyright in its MLSÂ® System. Data is deemed reliable but is not guaranteed accurate by Pillar 9â,,ç. The trademarks MLSÂ®, Multiple Listing ServiceÂ® and the associated logos are owned by The Canadian Real Estate Association (CREA) and identify the quality of services provided by real estate professionals who are members of CREA. Used under license.